

Debbie Bliss



alpaca silk two

fitted aran jacket
pattern on pages 20–23





trellis patterned jacket
pattern on pages 24-25

ribbon tied aran
pattern on pages 26-28

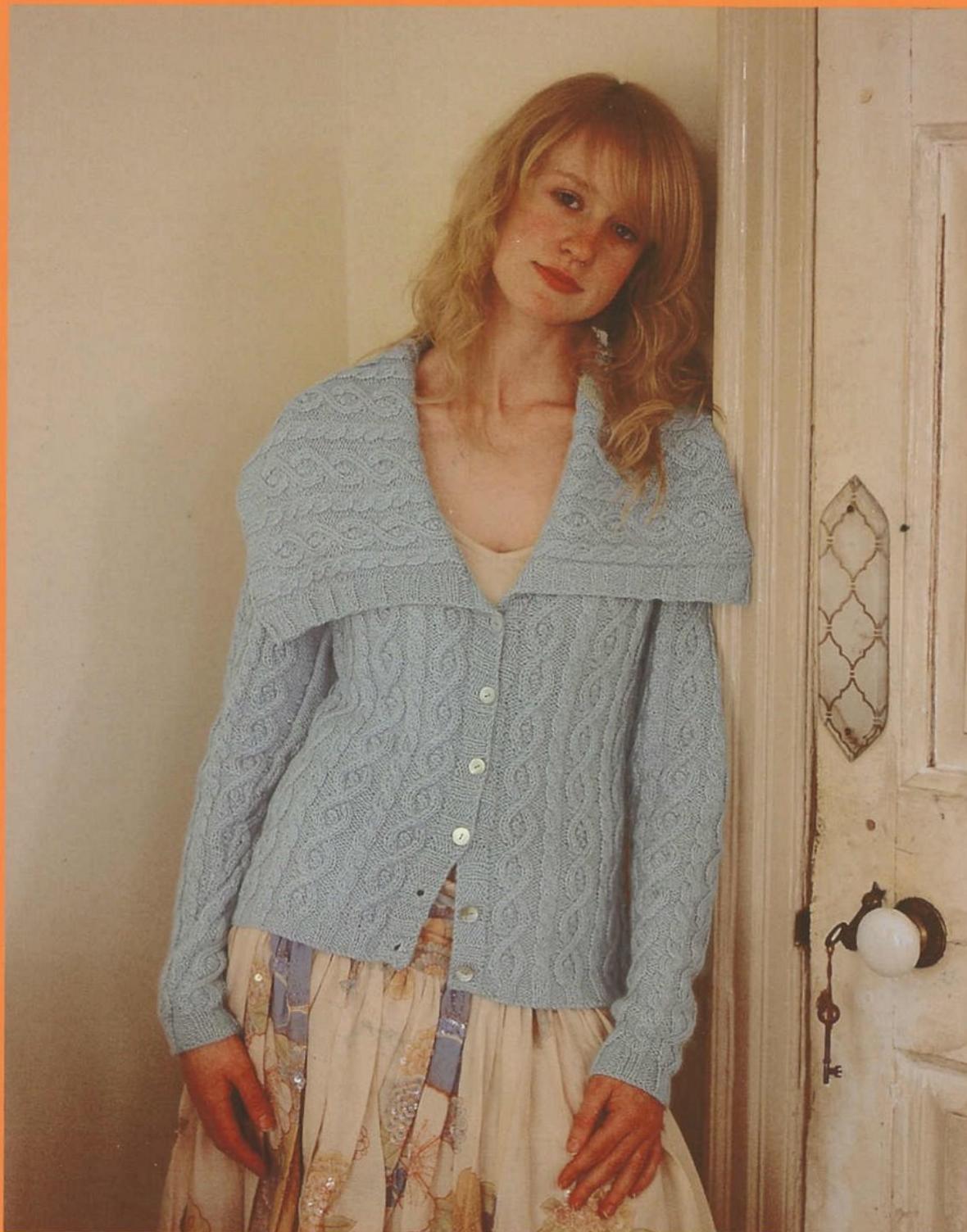


simple wrapover
pattern on pages 29-30



asymmetric rib sweater
pattern on pages 31–32





cable collared jacket
pattern on pages 33-36



poncho
pattern on page 37

lace panelled sweater
pattern on pages 38-39



sideways rib jacket
pattern on page 40



riviera sweater
pattern on pages 41-42



frill edged cardigan
pattern on pages 44-45



empire line cardigan

MEASUREMENTS

To fit bust	81-86	91-97	102-107	cm
	32-34	36-38	40-42	in
Actual measurements				
Bust	91	99	107	cm
	36	39	42	in
Length	66	68	73	cm
	26	27	29	in
Sleeve	45	47	49	cm
	17½	18½	19½	in

MATERIALS

11(13:15) 50g balls of Debbie Bliss alpaca silk dk in Taupe 03.

Pair of 4mm (US 6) knitting needles.

Cable needle.

3.00mm crochet hook.

1.5m/1½yd narrow velvet ribbon.

TENSION

22 sts and 23 rows to 10cm/4in square over cable, faggot and arrow lace patt and 25 sts to 10cm/4in square over cable and arrow lace, both when lightly pressed and using 4mm (US 6) needles.

ABBREVIATIONS

C4B = slip next 2 sts onto cable needle, hold at back, k2, then k2 from cable needle.

C4F = slip next 2 sts onto cable needle, hold at front, k2, then k2 from cable needle.

sk2togpo = slip 1, k2tog, pass slipped st over.

Also see page 46.

NOTES

Lightly press sample before checking tension, as row tension is only obtained after pressing. Do not start a new ball of yarn at the front edges, always join at the side.

PANEL A

(Worked over 11 sts)

1st row (right side) K1, yf, k3, sk2togpo, k3, yf, k1.

2nd and every wrong side row P11.

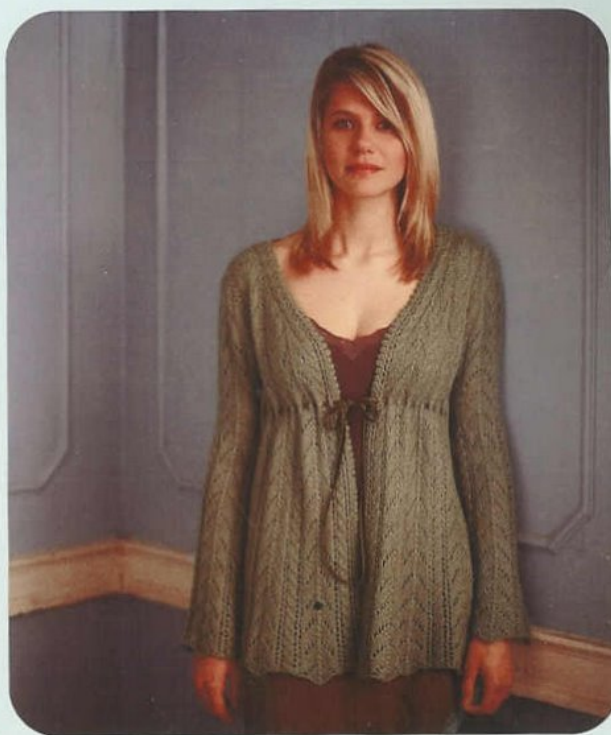
3rd row K2, yf, k2, sk2togpo, k2, yf, k2.

5th row K3, yf, k1, sk2togpo, k1, yf, k3.

7th row K4, yf, sk2togpo, yf, k4.

8th row As 2nd row.

These 8 rows form arrow lace patt panel A.



BACK

With 4mm (US 6) needles, cast on 138(150:162) sts.

1st row (right side) K8, [yrn, p2tog, k4] 1(2:3) times, [yrn, p2tog, work 11 sts of 1st row of panel A, yrn, p2tog, k4] 6 times, [yrn, p2tog, k4] 0(1:2) times, yrn, p2tog, k8.

2nd, 4th and every wrong side row P8, [yrn, p2tog, p4] 1(2:3) times, [yrn, p2tog, p11, yrn, p2tog, p4] 6 times, [yrn, p2tog, p4] 0(1:2) times, yrn, p2tog, p8.

3rd row K8, [yrn, p2tog, C4B] 1(2:3) times, [yrn, p2tog, work 11 sts of 3rd row of panel A, yrn, p2tog, C4B] 3 times, [yrn, p2tog, work 11 sts of 3rd row of panel A, yrn, p2tog, C4F] 3 times, [yrn, p2tog, C4F] 0(1:2) times, yrn, p2tog, k8.

These 4 rows form cable and faggot patt and **SET** the position of 6 patt panel A panels with st st at each side. Cont in patt, work 20 more rows.

Dec row (right side) K2, k2tog, patt to last 4 sts, skpo, k2.

Cont in patt and dec in this way at each end of 4 foll 8th rows. 128(140:152) sts.

Patt 23(23:31) rows.

Yoke dec row (right side) K3, [p2tog, k4] 1(2:3) times, [p2tog, patt 11, p2tog, k4] 6 times, [p2tog, k4] 0(1:2) times, p2tog, k3. 114(124:134) sts.

Next row P3, [k1, p4] 0(1:2) times, [k1, p4, k1, p11] 6 times, k1, [p4, k1] 1(2:3) times, p3.

Cont in patt with one st in reverse st st between cables as set, work 24 rows.

LEFT SLEEVE

With 4mm (US 6) needles, cast on 69(81:93) sts.

1st row (right side) K2, [yrn, p2tog, k4] 1(2:3) times, [yrn, p2tog, work 11 sts of 1st row of panel A, yrn, p2tog, k4] 3 times, [yrn, p2tog, k4] 0(1:2) times, yrn, p2tog, k2.

2nd, 4th and every wrong side row P2, [yrn, p2tog, p4] 1(2:3) times, [yrn, p2tog, p11, yrn, p2tog, p4] 3 times, [yrn, p2tog, p4] 0(1:2) times, yrn, p2tog, p2.

3rd row K2, [yrn, p2tog, C4B] 1(2:3) times, [yrn, p2tog, work 11 sts of 3rd row of panel A, yrn, p2tog, C4B] 3 times, [yrn, p2tog, C4B] 0(1:2) times, yrn, p2tog, k2.

These 4 rows form cable and faggot patt and **SET** the position of 3 patt A panels with 2 sts in st st at each side. Cont in patt, work 76(80:84) rows.

Dec row (right side) K2, [p2tog, k4] 1(2:3) times, [p2tog, patt 11, p2tog, k4] 3 times, [p2tog, k4] 0(1:2) times, p2tog, k2. 61(71:81) sts.

Cont in patt with one st in reverse st st between cables and panels, work 1 row.

Inc row (right side) Kfb, patt to last 2 sts, kfb, k1. Cont in patt and inc in this way at each end of 5 foll

4th rows, taking all inc sts into st st. 73(83:93) sts.

Patt 1 row.

Shape top

Cast off 3 sts at beg of next 2 rows.

Dec one st at each end of next 5 rows. 57(67:77) sts.

Patt 7(9:7) rows.

[Cast off 2 sts at beg and dec one st at end] of next 16(18:20) rows.

Cast off rem 9(13:17) sts.

RIGHT SLEEVE

Work as Left Sleeve but work C4F for C4B.

TO MAKE UP

Join shoulder seams. Join ends of back neck edgings and sew row ends of edging to back neck.

Front edging With wrong side facing and 3.00mm crochet hook, join on yarn at lower edge of left front, slipstitch in 1st space, [4 chain, slipstitch in 1st chain, slipstitch in next space] to end. Fasten off. Sew sleeves into armholes. Join side and sleeve seams. Thread ribbon through lace holes and stitches just under bust level.

fitted aran jacket

MEASUREMENTS

To fit bust	82	86	92	97	cm
	32	34	36	38	in
Actual measurements					
Bust	92	100	106	112	cm
	36	39½	41¾	44	in
Length to shoulder					
	51	52	53	54	cm
	20	20½	20¾	21¼	in
Sleeve length					
	48	48	49	49	cm
	19	19	19¼	19¼	in

MATERIALS

17(18:19:20) 50g balls of Debbie Bliss alpaca silk in Chocolate 14.

Pair each 4½mm (US 7) and 5mm (US 8) knitting needles.

7 buttons.

TENSION

18 sts and 24 rows to 10cm/4in square over st st using 5mm (US 8) needles.



2nd row K5(8:11:14), p1, k1, p1, work across 2nd row of Panels B and C, work 8 sts in trinity st, work across 2nd row of panels A and B, p1, k1, p1, k5(8:11:14).

3rd row P5(8:11:14), k1tbl, p1, k1tbl, work across 3rd row of Panels B and A, p8, work across 3rd row of panels C and B, k1tbl, p1, k1tbl, p5(8:11:14).

4th row K5(8:11:14), p1, k1, p1, work across 4th row of Panels B and C, work 8 sts in trinity st, work across 4th row of panels A and B, p1, k1, p1, k5(8:11:14).

These 4 rows **SET** the position of the patt panels and trinity st panel at centre of back, cont in patt working correct patt panel and trinity st rows.

Dec row P1(4:7:10), p2tog, patt to last 3(6:9:12) sts, p2tog, p1(4:7:10).

Work 3 rows in patt.

Rep the last 4 rows once more and the dec row again. 100(106:112:118) sts.

Work 5(7:7:9) rows in patt.

Inc row (right side) P2(5:8:11), m1, patt to last 2(5:8:11)sts, m1, p2(5:8:11).

Work 5 rows in patt.

Rep the last 6 rows 5 times more and the inc row again. 114(120:126:132) sts.

Work straight until back measures 31cm/12½in from cast on edge ending with a wrong side row.

Shape armholes

Cast off 6(7:8:9) sts at beg of next 2 rows.

102(106:110:114) sts.

Cont straight in patt until back measures 51(52:53:54)cm/20(20½:21:21½)in from cast on edge, ending with a wrong side row.

Shape shoulders

Cast off 17(17:18:19) sts at beg of next 2 rows and 17(18:19:19) sts at beg of foll 2 rows.

Cast off rem 34(36:36:38) sts.

LEFT FRONT

With 4½mm (US 7) needles, cast on 50(50:54:54) sts.

1st row (right side) P to end.

2nd row P1, * [k1, p1, k1] all in next st, p3tog; rep from * to last st, p1.

3rd row P to end.

4th row P1, * p3tog, [k1, p1, k1] all in next st; rep from * to last st, p1.

These 4 rows form the trinity stitch.

Rep the last 4 rows for 4cm/1½in, ending with a 3rd row.

Inc row (wrong side) P1, work 8 sts in trinity st, p3, m1, [p4(3:4:3), m1] 7(10:9:12) times, p10(8:6:6). 58(61:64:67) sts.

Change to 5mm (US 8) needles.

Work in patt as follows:

1st row (right side) P5(8:11:14), k1tbl, p1, k1tbl, work

across 1st row of Panels B and A, p9.

2nd row P1, work 8 sts in trinity st, work across 2nd row of panels A and B, p1, k1, p1, k5(8:11:14).

3rd row P5(8:11:14), k1tbl, p1, k1tbl, work across 3rd row of Panels B and A, p9.

4th row P1, work 8 sts in trinity st, work across 4th row of panels A and B, p1, k1, p1, k5(8:11:14).

These 4 rows **SET** the position of the patt panels and trinity st panel for button band, cont in patt working correct patt panel and trinity st rows.

Dec row (right side) P1(4:7:10), p2tog, patt to end. Work 3 rows in patt.

Rep the last 4 rows once more and the dec row again. 55(58:61:64) sts.

Work 5(7:7:9) rows in patt.

Inc row (right side) P2(5:8:11), m1, patt to end.

Work 5 rows in patt.

Rep the last 6 rows 5 times more and the inc row again. 62(65:68:71) sts.

Work straight until front measures 31cm/12½in from cast on edge, ending with a wrong side row.

Shape armhole

Cast off 6(7:8:9) sts at beg of next row. 56(58:60:62) sts.

Work straight until front measures 43(44:45:46)cm/17(17½:17¾:18)in from cast on edge, ending with a right side row.

Shape neck

Next row (wrong side) Cast off 8 sts, patt to end. 48(50:52:54) sts.

Dec one st at neck edge on every row until 34(35:37:38) sts rem.

Cont in patt until front measures same as Back to shoulder, ending at armhole edge.

Shape shoulder

Cast off 17(17:18:19) sts at beg of next row.

Work 1 row.

Cast off rem 17(18:19:19) sts.

RIGHT FRONT

Mark the position for 7 buttons on the left front trinity st button band, the first 2cm/¾in from lower edge, the seventh 2cm/¾in from neck edge, with the rem 5 spaced evenly between.

Work buttonholes on right side rows as follows:

Buttonhole row P4, p2tog, yrn, p3, patt to end.

With 4½mm (US 7) needles, cast on 50(50:54:54) sts. Working buttonholes to correspond with button markers work as follows:

1st row (right side) P to end.

2nd row P1, * [k1, p1, k1] all in next st, p3tog; rep from * to last st, p1.

3rd row P to end.

4th row P1, * p3tog, [k1, p1, k1] all in next st; rep

trellis patterned jacket

MEASUREMENTS

To fit bust	81-86	91-97	102-107	cm
	32-34	36-38	40-42	in
Actual measurements				
Bust	93	105	114	cm
	36½	41½	44½	in
Length to shoulder	47	51	55	cm
	18½	20	21½	in
Sleeve length	43	46	48	cm
	17	18	19	in

MATERIALS

12(13:15) 50g balls of Debbie Bliss alpaca silk dk in Crimson 05.
 Pair each 3¼mm (US 5), 4½mm (US 7), 5mm (US 8) and 5½mm (US 9) knitting needles.
 Long 3¼mm (US 5) and 5½mm (US 9) circular needles.
 Cable needle.

TENSION

27 sts and 50 rows to 10cm/4in square over trellis patt when lightly pressed using 5½mm (US 9) needles.

ABBREVIATIONS

C4F = cable 4 front, slip next 2 sts onto cable needle and hold at front of work, k2, then k2 from cable needle.

C4B = cable 4 back, slip next 2 sts onto cable needle and hold at back of work, k2, then k2 from cable needle.

Also see page 46.

BACK, FRONT and SLEEVES

(worked in one piece from lower back edge)

Back

With 4½mm (US 7) needles cast on 126(142:154) sts.
 Work in patt as follows:

1st row (right side) * C4F; rep from * to last 2 sts, k2.

2nd row P to end.

3rd row K2, * C4B; rep from * to end.

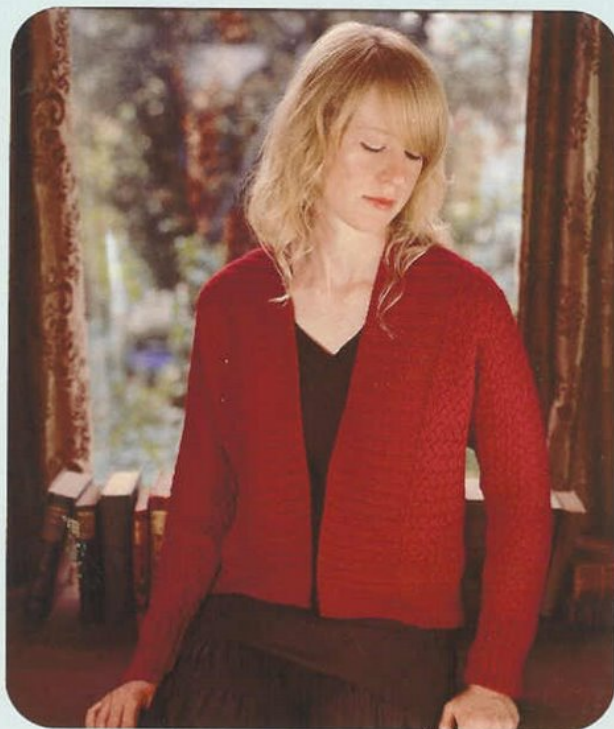
4th row P to end.

These 4 rows form the patt and are repeated throughout.

Cont in patt until work measures 8cm/3in from cast on edge, ending with a p row.

Change to 5mm (US 8) needles.

Cont in patt until work measures 16(17:18)cm/6½(6¾:7)in from cast on edge, ending with a p row.



Change to 5½mm (US 9) needles.

Cont in patt until work measures 28(30:32)cm/11(11½:12½)in from cast on edge, ending with a p row.
 Change to 5½mm (US 9) circular needle.

Shape sleeves

Cast on 8 sts at beg of next 22(24:26) rows.
 302(334:362) sts.

Cont straight until work measures 47(51:55)cm/18½(20:21½)in from cast on edge, ending with a p row.
 Mark each end of last row with a coloured thread to mark shoulder line.

Divide for fronts

Next row Patt 130(146:158) sts, cast off next 42(42:46) sts, patt to end.

Left front

Cont on last set of sts for left front, leave rem 130(146:158) sts on a holder for right front.

Cont straight in patt until same number of rows have been worked between last cast on row of sleeve shaping and coloured thread, ending at sleeve edge.

Shape sleeve

Cast off 8 sts at beg of next and 10(11:12) foll alt rows. 42(50:54) sts.

Work a further 12(13:14)cm/4¾(5:5½)in in patt, ending with a p row.

Change to 5mm (US 8) needles.

Work a further 8(9:10)cm/3¼(3½:4)in in patt, ending with a p row.

ribbon tied aran

MEASUREMENTS

To fit bust	86-91	97-102	107-112	cm
	34-36	38-40	42-44	in
Actual measurements				
Bust	94	104	114	cm
	37	41	45	in
Length (including edging)				
	61	65	67	cm
	24	25½	26½	in
Sleeve (including edging)				
	46	46	46	cm
	18	18	18	in

MATERIALS

13(15:17) 50g balls of Debbie Bliss alpaca silk dk in Mallard 09.

Pair of 4mm (US 6) knitting needles.

Medium length 4mm (US 6) circular needle.

Cable needle.

2m/2½yd narrow velvet ribbon.

TENSIONS

26 rows to 10cm/4in square over all cable panel patts using 4mm (US 6) needles; 33 sts of diamond bobble panel A measure 10.5cm and 24 sts of plait and bobble panel B measure 8.5cm.

ABBREVIATIONS

C4B = slip next 2 sts onto cable needle, hold at back, k2, then k2 from cable needle.

C4BP = slip next 2 sts onto cable needle, hold at back, k2, then p2 from cable needle.

C4F = slip next 2 sts onto cable needle, hold at front, k2, then k2 from cable needle.

C4FP = slip next 2 sts onto cable needle, hold at front, p2, then k2 from cable needle.

C5B = slip next 2 sts onto cable needle, hold at back, k3, then k2 from cable needle.

C5BP = slip next 2 sts onto cable needle, hold at back, k3, then p2 from cable needle.

C5F = slip next 3 sts onto cable needle, hold at front, k2, then k3 from cable needle.

C5FP = slip next 3 sts onto cable needle, hold at front, p2, then k3 from cable needle.

C7B = slip next 4 sts onto cable needle, hold at back, k3, slip the p st from cable needle onto left needle and hold cable needle in front of it, p1, then k3 from cable needle.

C8B = slip next 4 sts onto cable needle, hold at back, k4, then k4 from cable needle.



C8F = slip next 4 sts onto cable needle, hold at front, k4, then k4 from cable needle.

MB = [p1, yo, p1, yo, p1] all in one st, turn, k5, turn, p5, turn, skpo, k1, k2tog, turn, p3tog.

Also see page 46.

PANEL A

Worked over 33 sts.

1st row (right side) P13, k3, p1, k3, p13.

2nd and every wrong side row K and p the sts as they appear.

3rd row P13, C7B, p13.

5th row P11, C5B, MB, C5F, p11.

7th row P9, C5BP, k2, p1, k2, C5FP, p9.

9th row P7, C5BP, C4B, MB, C4F, C5FP, p7.

11th row P5, C5BP, C4BP, k2, p1, k2, C4FP, C5FP, p5.

13th row P3, C5BP, C4BP, C4B, MB, C4F, C4FP, C5FP, p3.

15th row P1, C5BP, [C4BP] twice, k2, p1, k2, [C4FP] twice, C5FP, p1.

17th row P1, k3, [C4BP] twice, C4B, MB, C4F, [C4FP] twice, k3, p1.

19th row P1, C5FP, [C4BP] twice, k2, p1, k2, [C4FP] twice, C5BP, p1.

21st row P3, C5FP, C4BP, C4B, MB, C4F, C4FP, C5BP, p3.

23rd row P5, C5FP, C4BP, k2, p1, k2, C4FP, C5BP, p5.

25th row P7, C5FP, C4B, MB, C4F, C5BP, p7.

27th row P9, C5FP, k2, p1, k2, C5BP, p9.

29th row P11, C5FP, MB, C5BP, p11.

31st row As 3rd row.

32nd row As 2nd row.

These 32 rows form the diamond bobble panel A.

simple wrapover

MEASUREMENTS

To fit bust	86	92	97	102	cm
	34	36	38	40	in
Actual measurements					
Bust	96	101	107	114	cm
	38	39½	42	44½	in
Length to shoulder					
	50	52	54	56	cm
	19¾	20½	21¼	22	in
Sleeve length	32	32	33	33	cm
	12½	12½	13	13	in

MATERIALS

7(8:8:9) 50g balls of Debbie Bliss alpaca silk dk in Indigo 08.

Pair each 3¼mm (US 5) and 4mm (US 6) knitting needles.

2m/2¼yd of 1.5cm/½in wide satin ribbon.

TENSION

22 sts and 28 rows to 10cm/4in square over st st using 4mm (US 6) needles.

ABBREVIATIONS

See page 46.

LEFT FRONT

With 3¼mm (US 5) needles, cast on 68(71:75:78) sts.

K 1 row.

Change to 4mm (US 6) needles.

Next row (right side) K to end.

Next row K1, p to end.

Rep the last 2 rows once more.

Dec row K7, skpo, k to last 5 sts, k2tog, k3.

Next row K1, p to end.

Next row K to end.

Next row K1, p to end.

Rep the last 4 rows 4 times more and the dec row again. 56(59:63:66) sts.

Keeping side edge straight, cont to dec at front edge on every foll 4th row, work 11(13:15:17) rows.

Inc row K7, m1, work to end.

Work 5 rows.

Rep the last 6 rows 4 times more and the inc row again.

Keeping side edge straight, cont to dec at front edge on every foll 4th row until side seam measures



30(31:32:33)cm/11¼(12¼:12½:13)in from cast on edge, ending with a wrong side row.

Shape armhole

Cont to dec at front edge as set and cast off 7(7:8:8) sts at beg of the next row.

Work 1 row.

Dec one st at armhole edge of next and 7(8:8:9) foll right side rows.

Keeping armhole edge straight cont to dec at neck edge on every foll 4th row until 19(20:22:23) sts rem.

Cont straight until front measures 50(52:54:56)cm/19¾(20½:21¼:22)in ending at armhole edge.

Shape shoulder

Cast off 10(10:11:11) sts at beg of next row.

Work 1 row.

Cast off rem 9(10:11:12) sts.

RIGHT FRONT

With 3¼mm (US 5) needles, cast on 68(71:75:78) sts.

K 1 row.

Change to 4mm (US 6) needles.

Next row (right side) K to end.

Next row P to last st, k1.

Rep the last 2 rows once more.

Dec row K3, skpo, k to last 9 sts, k2tog, k7.

Next row P to last st, k1.

Next row K to end.

Next row P to last st, k1.

Rep the last 4 rows 4 times more and the dec row again. 56(59:63:66) sts.

asymmetric rib sweater

MEASUREMENTS

To fit bust	81-87	102-107	112-117	cm
	32-34	36-38	40-42	in
Actual measurements				
Bust	95	106	118	cm
	37½	42	46½	in
Length at centre back				
	48	53	57	cm
	19	20¾	22½	in
Sleeve seam	45	46	48	cm
	17¾	18	19	in

MATERIALS

17(18:19) 50g balls of Debbie Bliss alpaca silk in Teal 18.

Pair 5mm (US 8) knitting needles.

5mm (US 8) circular needle.

TENSION

20 sts and 25 rows to 10cm/4in square over patt using 5mm (US 8) needles.

ABBREVIATIONS

See page 46.

FRONT

Starting at lower left side seam.

With 5mm (US 8) needles, cast on 5(7:9) sts.

1st row (right side) K1, [p1, k1] to end.

2nd row Purl.

These 2 rows form the pattern.

3rd row Cast on 6 sts, k1, [p1, k1] to end.

4th row Purl.

Rep the last 2 rows 11(12:13) times more. 77(85:93) sts.

The last 26(28:30) rows form the left side seam.

Now work 1st and 2nd rows twice more.

The last 6 rows form the left underarm.

Change to 5mm (US 8) circular needle and work in rows not rounds.

Shape armhole

Next row Cast on 6 sts, k1, [p1, k1] to end.

Next row Purl.

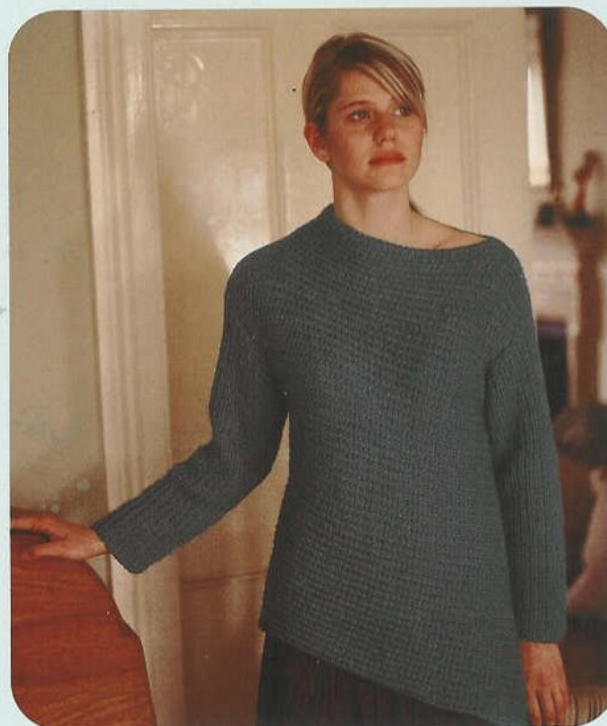
Rep the last 2 rows 5(3:2) times more. 113(109:111) sts.

2nd and 3rd sizes only

Next row Cast on 8 sts, k1, [p1, k1] to end.

Next row Purl.

Rep the last 2 rows (1:2) times more. (125:135) sts **.



All sizes

Work left shoulder and neck as follows:

Cont straight in patt as set by 1st and 2nd rows, until work measures 31(36:41)cm/12¼(14¼:16)in from **, ending with a p row.

Next row Cast off 16(18:20) sts for right neck edge, patt to end. 97(107:115) sts.

Next row (wrong side) Cast off 6 sts, p to end.

Next row K1, [p1, k1] to end.

Rep the last 2 rows 5(6:7) times more. 61(65:67) sts. Change to 5mm (US 8) needles.

Next row (wrong side) Cast off 6 sts, with one st on needle after cast off, p next 18 sts, turn, and cont on these 19 sts only, leave rem 36(40:42) sts on a spare needle.

Next row K1, [p1, k1] to end.

Next row Cast off 6 sts, p to end.

Next row K1, [p1, k1] to end.

Rep the last 2 rows once more.

Cast off rem 7 sts.

The last 19(21:23) rows form the right side seam and underarm.

Shape right armhole

With wrong side facing, rejoin yarn to rem 36(40:42) sts on spare needle, cast off 7 sts, p to end.

Next row K1, [p1, k1] to end.

Cast off 6 sts at beg of next and foll 3(2:1) wrong side rows. 5(15:23) sts.

Next row K1, [p1, k1] to end.

cable collared jacket

MEASUREMENTS

To fit bust	82-87	92-97	102-107	cm
	32-34	36-38	40-42	in
Actual measurements				
Bust	92	104	116	cm
	36	41	45½	in
Length to shoulder	56	58	60	cm
	22	22¾	23½	in
Sleeve length	48	48	48	cm
	19	19	19	in

MATERIALS

14(15:16) 50g balls of Debbie Bliss alpaca silk dk in Sky 10.

Pair each 3¼mm (US 5) and 4mm (US 6) knitting needles.

One each 3¼mm (US 5) and 4mm (US 6) circular needle.

Cable needle.

6 Buttons.

TENSIONS

22 sts and 28 rows over st st and 26 sts and 28 rows over patt, both to 10cm/4in square using 4mm (US 6) needles.

ABBREVIATIONS

C4F = slip next 2 sts onto cable needle and hold at front of work, k2, then k2 from cable needle.

Cr3B = slip next st onto cable needle and hold at back of work, k2, then p1 from cable needle.

Cr3F = slip next 2 sts onto cable needle and hold at front of work, p1, then k2 from cable needle.

Cr5B = slip next 3 sts onto cable needle and hold at back of work, k2, slip the 3rd st from cable needle back onto left hand needle, p this st, then k2 from cable needle.

MB = k into front, back, front and back of next st, using point of left hand needle, lift 2nd, 3rd and 4th sts over first st to make bobble.

Also see page 46.

BACK

With 3¼mm (US 5) needles cast on 101(115:129) sts.

1st rib row (right side) K3, * p4, k3; rep from * to end.

2nd rib row P3, * k4, p3; rep from * to end.

Rep the last 2 rows twice more, and the 1st row again.



Inc row (wrong side) P3, [k4, p2, m1, p1] 1(2:3) times, * k4, p1, m1, p1, m1, p1, k4, p2, m1, p1; rep from * to last 7(14:21) sts, [k4, p2, m1, p1] 0(1:2) times, k4, p3. 120(136:152) sts.

Change to 4mm (US 6) needles and work in patt as follows:

1st row (right side) P7, [k4, p4] 0(1:2) times, * k4, p3, Cr3B, p1, Cr3F, p3; rep from * 5 times more, [k4, p4] 0(1:2) times, k4, p7.

2nd row K7, [p4, k4] 0(1:2) times, * p4, k3, p2, k3, p2, k3; rep from * 5 times more, [p4, k4] 0(1:2) times, p4, k7.

3rd row P7, [k4, p4] 0(1:2) times, * k4, p2, Cr3B, p3, Cr3F, p2; rep from * 5 times more, [k4, p4] 0(1:2) times, k4, p7.

4th row K7, [p4, k4] 0(1:2) times, * p4, k2, p2, k5, p2, k2; rep from * 5 times more, [p4, k4] 0(1:2) times, p4, k7.

5th row P7, [C4F, p4] 0(1:2) times, * C4F, p2, k2, p2, MB, p2, k2, p2; rep from * 5 times more, [C4F, p4] 0(1:2) times, C4F, p7.

6th row K7, [p4, k4] 0(1:2) times, * p4, k2, p2, k5, p2, k2; rep from * 5 times more, [p4, k4] 0(1:2) times, p4, k7.

7th row P7, [k4, p4] 0(1:2) times, * k4, p2, Cr3F, p3, Cr3B, p2; rep from * 5 times more, [k4, p4] 0(1:2) times, k4, p7.

8th row K7, [p4, k4] 0(1:2) times, * p4, k3, p2, k3, p2, k3; rep from * 5 times more, [p4, k4] 0(1:2) times, p4, k7.

9th row P7, [k4, p4] 0(1:2) times, * k4, p3, Cr3F, p1, Cr3B, p3; rep from * 5 times more, [k4, p4] 0(1:2) times, k4, p7.

10th row K7, [p4, k4] 0(1:2) times, * p4, k4, p2, k1, p2, k4;

poncho

MEASUREMENTS

To fit all sizes

Finished size approximately 130cm/51in square.

MATERIALS

Eighteen 50g balls of Debbie Bliss alpaca silk dk in Taupe 03.

Short 3¼mm (US 5) circular needle.

Long 4mm (US 6) circular needle.

TENSION

22 sts and 28 rows to 10cm/4in square over st st using 4mm (US 6) needles.

ABBREVIATIONS

kfpb = knit into front and purl into back of next st.

skpo = slip 1, k1, pass slipped st over.

Also see page 46.

TO MAKE

With a 4mm (US 6) circular needle, cast on 283 sts.

1st row (right side) P1, [k2, p1] to end.

2nd row Purl.

Rep these 2 rows for 5cm/2in, ending with a p row.

Next row (right side) P1, [k2, p1] 3 times, k122 sts, p1, [k2, p1] 6 times, k122, [p1, k2] 3 times, p1.

Next row Purl.

Rep the last 2 rows until work measures 51cm/20in from cast on edge, ending with a p row.

Divide for neck

**** Next row** (right side) P1, [k2, p1] 3 times, k122 sts, p1, [k2, p1] twice, k1, kfpb, turn and cont on these 142 sts only, leave rem sts on a spare needle.

Next row Purl.

Next row P1, [k2, p1] 3 times, k122 sts, [p1, k2] 3 times, p1.

Rep the last 2 rows until work measures 79cm/31in from cast on edge, ending with a p row. **

Make a note of the number of rows worked from ** to **.

Leave these sts on a spare needle.

With right side facing, rejoin yarn to rem 142 sts on first spare needle, p1, [k2, p1] 3 times, k122, [p1, k2] 3 times, p1.



Next row Purl.

Next row P1, [k2, p1] 3 times, k122 sts, [p1, k2] 3 times, p1.

Rep the last 2 rows until work measures 79cm/31in from cast on edge, ending with a p row making sure that the same number of rows for this side of the neck has been worked as from ** to **.

Joining row (right side) P1, [k2, p1] 3 times, k122 sts, p1, [k2, p1] twice, k1, skpo, p1, [k2, p1] 3 times, k122, [p1, k2] 3 times, p1. 283 sts.

Next row Purl.

Next row P1, [k2, p1] 3 times, k122 sts, p1, [k2, p1] 6 times, k122, [p1, k2] 3 times, p1.

Rep the last 2 rows until work measures 125cm/49in from cast on edge, ending with a p row.

Next row P1, [k2, p1] to end.

Next row Purl.

Rep the last 2 rows, until work measures 130cm/51in from beg, ending with a right side row.

Cast off knitwise.

COLLAR

With right side facing, 3¼mm (US 5) circular needle and starting at point where work was divided for the neck, pick up and k140 sts around neck edge.

Every round [K2, p2] to end.

Rep this round until collar measures 10cm/4in.

Cast off in rib.

lace panelled sweater

MEASUREMENTS

To fit bust

81	86	92	97	102	cm
32	34	36	38	40	in

Actual measurements

Bust	92	97	102	107	112	cm
	36	38	40	42	44	in

Length to shoulder

51	52	53	54	55	cm
20	20½	20¾	21¼	21½	in

Sleeve length

44	44	45	45	45	cm
17¼	17¼	17¾	17¾	17¾	in

MATERIALS

9(10:10:11:12) 50g balls of Debbie Bliss alpaca silk dk in Apple 12.

Pair each 3½mm (US 5) and 4mm (US 6) knitting needles.

TENSION

22 sts and 28 rows to 10cm/4in square over st st using 4mm (US 6) needles.

ABBREVIATIONS

sk2togpo = slip 1, k2tog, pass slipped st over.

Also see page 46.

BACK

With 3½mm (US 5) needles cast on

93(100:107:114:121) sts.

K 1 row.

Change to 4mm (US 6) needles and work in patt as follows:

1st row P7, * yon, k3, sk2togpo, k3, yon, p1(2:3:4:5); rep from * to last 16 sts, yon, k3, sk2togpo, k3, yon, p7.

2nd, 4th and 6th rows K7, * p9, k1(2:3:4:5); rep from * to last 16 sts, p9, k7.

3rd row P7, * k1, yf, k2, sk2togpo, k2, yf, k1, p1(2:3:4:5); rep from * to last 16 sts, k1, yf, k2, sk2togpo, k2, yf, k1, p7.

5th row P7, * k2, yf, k1, sk2togpo, k1, yf, k2, p1(2:3:4:5); rep from * to last 16 sts, k2, yf, k1, sk2togpo, k1, yf, k2, p7.

7th row P7, * k3, yf, sk2togpo, yf, k3, p1(2:3:4:5); rep from * to last 16 sts, k3, yf, sk2togpo, yf, k3, p7.

8th row As 2nd row.

These 8 rows form the patt.



Work a further 6 rows.

Dec row P5, p2tog, patt to last 7 sts, p2tog, p5. Work 5 rows.

Dec row P4, p2tog, patt to last 6 sts, p2tog, p4. Work 5 rows.

Dec row P3, p2tog, patt to last 5 sts, p2tog, p3. Work 5 rows.

Dec row P2, p2tog, patt to last 4 sts, p2tog, p2. Work 5 rows.

Dec row P1, p2tog, patt to last 3 sts, p2tog, p1. Work 5(5:7:9:11) rows straight.

Inc row P2, m1, patt to last 2 sts, m1, p2. Work 3 rows.

Inc row P3, m1, patt to last 3 sts, m1, p3. Work 3 rows.

Inc row P4, m1, patt to last 4 sts, m1, p4. Work 3 rows.

Inc row P5, m1, patt to last 5 sts, m1, p5. Work 3 rows.

Inc row P6, m1, patt to last 6 sts, m1, p6. 93(100:107:114:121) sts.

Cont straight until back measures 32(32:33:33:34)cm/12½(12½:13:13:13½)in from cast on edge, ending with a wrong side row.

Shape armholes

Cast off 6(7:8:9:10) sts at beg of next 2 rows. 81(86:91:96:101) sts.

Dec one st at each end of next and every foll alt row until 65(70:75:80:85) sts rem.

sideways rib jacket

MEASUREMENTS

To fit bust	87-97	97-107	107-117	cm
	34-38	38-42	42-46	in
Actual measurements				
Bust	106	118	128	cm
	41¾	46½	50½	in
Length	68	70	73	cm
	27	27¾	29	in
Sleeve length	45	46	48	cm
	17¾	18	19	in

MATERIALS

23(25:27) 50g balls of Debbie Bliss alpaca silk in Mauve 15.

Pair 5mm (US 8) knitting needles.

Long 5mm (US 8) circular needle.

TENSION

18 sts and 24 rows to 10cm/4in square over patt using 5mm (US 8) needles.

ABBREVIATIONS

See page 46.

NOTE

The body of this jacket is worked sideways in one piece from the front edge of the right front, across the back and then across the left front to the front edge, with the armholes worked as vertical slits into which the sleeves are inserted. The fronts can be wrapped and pinned in place or left to fall open.

BODY

Right front With 5mm (US 8) circular needle, cast on 122(125:131) sts.

1st row (right side) K2, [p1, k2] to end.

2nd row Purl to end.

These 2 rows form the patt and are repeated.

Work in patt until right front measures 46(51:56)cm/18(20:22)in from cast on edge, ending with a wrong side row.

Shape right armhole

Next row (right side) Cast off 43(46:49) sts in patt, patt to end.

Next row Patt to end then cast on 43(46:49) sts. 122(125:131) sts.

Back Cont in patt; and work a further

53(59:64)cm/20¾(23¼:25½)in for the back, ending with a wrong side row.



Shape left armhole

Next row (right side) Cast off 43(46:49) sts in patt, patt to end.

Next row Patt to end then cast on 43(46:49) sts. 122(125:131) sts.

Left front Cont in patt, and work a further 46(51:56)cm/18(20:22)in for left front, ending with a right side row. Cast off in patt.

SLEEVES

With 5mm (US 8) needles, cast on 38(44:50) sts.

1st row (right side) K2, [p1, k2] to end.

2nd row Purl to end.

These 2 rows form the patt and are repeated.

Patt 6(8:10) more rows.

Next row (right side) K2, m1, patt to last 2 sts, m1, k2. Patt 3 rows.

Working k2 at each end of every right side row, and taking all inc sts into patt, rep the last 4 rows until there are 86(92:98) sts.

Cont straight in patt until sleeve measures 45(46:48)cm/17¾(18:19)in from cast on edge. Cast off.

Place a marker at the centre of the cast off edge.

TO MAKE UP

Create shoulder seams and armholes by joining back to fronts for 15cm/6in from ends of armhole cast on/off rows. Join sleeve seams. Sew sleeves into armholes with sleeve marker to shoulder seam.

riviera sweater

MEASUREMENTS

To fit bust

82	87	92	97	102	cm
32	34	36	38	40	in

Actual measurements

Bust	86	91	97	102	107	cm
	34	36	38	40	42	in

Length to shoulder

50	50	52	52	52	cm
19¾	19¾	20½	20½	20½	in

Sleeve length

45	45	46	46	46	cm
17¾	17¾	18	18	18	in

MATERIALS

13(13:14:15:16) 50g balls of Debbie Bliss alpaca silk dk in Raspberry 06.

Pair each 3¼mm (US 3), 3¾mm (US 5) and 4mm (US 6) knitting needles.

Long 3¾mm (US 5) and 4mm (US 6) circular needles.

Cable needle.

TENSIONS

22 sts and 28 rows over st st and 28 sts and 28 rows over patt panels, both to 10cm/4in square using 4mm (US 6) needles.

ABBREVIATIONS

C4B = slip next 2 sts onto cable needle and hold at back of work, k2, then k2 from cable needle.

C4F = slip next 2 sts onto cable needle and hold at front of work, k2, then k2 from cable needle.

Cr3B = slip next st onto cable needle and hold at back of work, k2, then p1 from cable needle.

Cr3F = slip next 2 sts onto cable needle and hold at front of work, p1, then k2 from cable needle.

Cr5B = slip next 3 sts onto cable needle and hold at back of work, k2, slip the 3rd st from cable needle back on left hand needle, p this st, then k2 from cable needle.

Also see page 46.

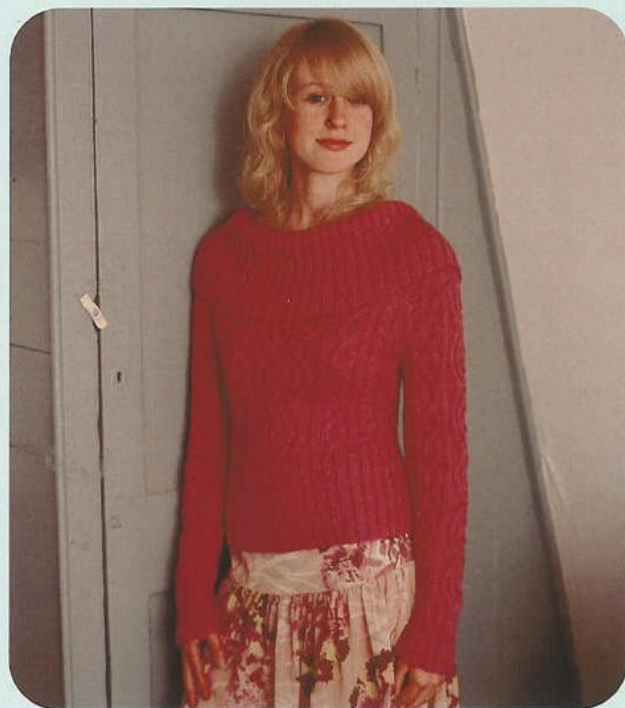
Panel A (worked over 15 sts)

1st row (right side) K2, p2, Cr3F, p1, Cr3B, p2, k2.

2nd row P2, k3, p2, k1, p2, k3, p2.

3rd row K2, p3, Cr5B, p3, k2.

4th row As 2nd row.



5th row K2, p2, Cr3B, p1, Cr3F, p2, k2.

6th row P2, k2, p2, k3, p2, k2, p2.

7th row K2, p1, Cr3B, p3, Cr3F, p1, k2.

8th row P2, k1, p2, k5, p2, k1, p2.

9th row K2, p1, k2, p5, k2, p1, k2.

10th row As 8th row.

11th row K2, p1, Cr3F, p3, Cr3B, p1, k2.

12th row P2, k2, p2, k3, p2, k2, p2.

These 12 rows form patt panel A and are repeated throughout.

Panel B (worked over 10 sts)

1st row (right side) P2, k2, C4B, p2.

2nd row K2, p6, k2.

3rd row P2, C4F, k2, p2.

4th row As 2nd row.

These 4 rows form patt panel B and are repeated throughout.

Panel C (worked over 30 sts)

1st row (right side) P6, [Cr3B, Cr3F] 3 times, p6.

2nd row K6, p2, k2, [p4, k2] twice, p2, k6.

3rd row P5, Cr3B, [p2, C4B] twice, p2, Cr3F, p5.

4th and every foll alt row K all the k sts and p the p sts.

5th row P4, Cr3B, p2, [Cr3B, Cr3F] twice, p2, Cr3F, p4.

7th row P3, [Cr3B, p2] twice, C4F, [p2, Cr3F] twice, p3.

9th row P2, [Cr3B, p2] twice, Cr3B, Cr3F, [p2, Cr3F] twice, p2.

11th row P2, [k2, p3] twice, k2, p2, k2, [p3, k2] twice, p2.

13th row P2, [Cr3F, p2] twice, Cr3F, Cr3B, [p2, Cr3B] twice, p2.

15th row P3, [Cr3F, p2] twice, C4F, [p2, Cr3B] twice, p3.

17th row P4, Cr3F, p2, [Cr3F, Cr3B] twice, p2, Cr3B, p4.

19th row P5, Cr3F, [p2, C4B] twice, p2, Cr3B, p5.

21st row P6, [Cr3F, Cr3B] 3 times, p6.

23rd row P7, [C4F, p2] twice, C4F, p7.

24th row K7, [p4, k2] twice, p4, k7.

These 24 rows form patt panel C and are repeated throughout.

BACK

With 3¼mm (US 5) needles cast on 112(116:124:128:136) sts.

1st, 4th and 5th sizes only

1st rib row [K2, p2] 12(14:15) times, k4, [p2, k4] twice, [p2, k2] 12(14:15) times.

2nd rib row [P2, k2] 12(14:15) times, p4, [k2, p4] twice, [k2, p2] 12(14:15) times.

2nd and 3rd sizes only

1st rib row [P2, k2] (12:13) times, p2, k4, [p2, k4] twice, [p2, k2] (12:13) times, p2.

2nd rib row [K2, p2] (12:13) times, k2, p4, [k2, p4] twice, [k2, p2] (12:13) times, k2.

All sizes

Rep the last 2 rows for 15cm/6in, ending 1st rib row.

Inc row Rib 11(13:17:19:23), m1, rib 24, m1, rib 10, m1, rib 22, m1, rib 10, m1, rib 24, m1, rib 11(13:17:19:23). 118(122:130:134:142) sts.

Change to 4mm (US 6) needles and patt.

1st row P4(6:10:12:16), work across 1st row of panels A, B, A, C, A, B, and A, p4(6:10:12:16).

2nd row K4(6:10:12:16), work across 2nd row of panels, A, B, A, C, A, B, and A, k4(6:10:12:16).

These 2 rows **SET** the position of the patt panels with reverse st st at each side.

Cont in patt working correct patt panel rows.

Work a further 8(6:8:6:8) rows.

Inc row (right side) P3, m1, patt to last 3 sts, m1, p3. Work 9(7:9:7:9) rows.

Rep the last 10(8:10:8:10) rows 1(2:1:2:1) times more and the inc row once more. 124(130:136:142:148) sts.

Cont in patt until work measures 29(29:30:30:30)cm/11½(11½:11½:11½)in from cast on edge, ending with a wrong side row.

Shape armholes

Cast off 3(4:5:6:7) sts at beg of next 2 rows.

118(122:126:130:134) sts.

Dec one st at each end of the next and 2(3:4:5:6)

folll alt rows. 112(114:116:118:120) sts. **

Work straight until back measures

45(45:46:46:46)cm/17¼(17¼:18¼:18¼:18¼)in from cast on edge, ending with a wrong side row.

Shape neck

Next row (right side) Patt 23(24:25:26:27), turn and work on these sts only for first side of back neck, leave rem sts on a spare needle.

Dec one st at neck edge of next 7 rows and 2 foll alt rows. 14(15:16:17:18) sts.

Work 2 rows straight.

Cast off.

With right side facing, slip 66 sts at centre back onto a holder, then patt to end.

Dec one st at neck edge of next 7 rows and 2 foll alt rows. 14(15:16:17:18) sts.

Work 2 rows straight. Cast off.

FRONT

Work as given for Back to **, then cont until front measures 38(38:39:39:39)cm/15(15:15½:15½:15½)in from cast on edge, ending with a wrong side row.

Shape neck

Next row (right side) Patt 33(34:35:36:37) sts, turn and work on these sts only for first side of front neck, leave rem sts on a spare needle.

*** Dec one st at neck edge of next 5 rows and then every foll alt row until 14(15:16:17:18) sts rem.

Work straight until front matches Back to shoulder, ending at armhole edge.

Cast off. ***

With right side facing, slip 46 sts at centre front onto a holder, patt to end.

Work from *** to *** of first side of front neck shaping.

SLEEVES

With 3¼mm (US 5) needles, cast on 56(56:60:60:60) sts.

1st and 2nd sizes only

1st rib row [K2, p2] 5 times, k4, [p2, k4] twice, [p2, k2] 5 times.

2nd rib row [P2, k2] 5 times, p4, [k2, p4] twice, [k2, p2] 5 times.

3rd, 4th and 5th sizes only

1st rib row [P2, k2] 5 times, p2, k4, [p2, k4] twice, [p2, k2] 5 times, p2.

2nd rib row [K2, p2] 5 times, k2, p4, [k2, p4] twice, [k2, p2] 5 times, k2.

All sizes

Rep the last 2 rows for 10cm/4in, ending with a 1st rib row.

Inc row Rib 7(7:9:9:9), m1, rib 10, m1, rib 22, m1, rib 10, m1, rib 7(7:9:9:9). 60(60:64:64:64) sts.

Change to 4mm (US 6) needles and patt.

1st row P0(0:2:2:2), work across 1st row of panels A, C and A, p0(0:2:2:2).

2nd row K0(0:2:2:2), work across 2nd row of panels A, C and A, k0(0:2:2:2).

These 2 rows **SET** the position for the patt panels.
Cont in patt working correct patt panel rows and inc one st at each end of the next and every foll 6th row until there are 90(90:94:94:94) sts, working inc sts into reverse st st.

Cont straight until sleeve measures
45(45:46:46:46)cm/17½(17½:18:18:18)in from cast on edge, ending with a wrong side row.

Shape sleeve top

Cast off 3(4:5:6:7) sts at beg of next 2 rows.
84(82:84:82:80) sts.

Dec one st at each end of the next 10(8:10:8:6) rows then on 7(8:7:8:9) foll alt rows. 50 sts.

Cast off 2 sts at beg of next 4 rows, then 3 sts at beg of next 8 rows.

Cast off rem 18 sts.

COLLAR

Join right shoulder seam.

With 3¼mm (US 3) circular needle, pick up and k 35 sts down left front neck, k across 46 sts from front

neck holder, pick up and k 34 sts up right front neck, 14 sts down right back neck, k across 66 sts from back neck holder, then pick up and k 14 sts up left back neck. 209 sts.

1st row (wrong side) P2, * k1, p2; rep from * to end.

2nd row K2, * p1, k2; rep from * to end.

Work 5cm/2in rib as set, ending with a 1st rib row.

Inc row (right side) K2, * p1, m1, k2; rep from * to end. 278 sts.

Next row P2, * k2, p2; rep from * to end.

Next row K2, * p2, k2; rep from * to end.

Work a further 5cm/2in rib as set.

Change to 3¼mm (US 5) circular needle.

Work a further 16cm/6¼in rib as set.

Cast off loosely in rib.

TO MAKE UP

Join left shoulder and neckband seams, reversing seam on neckband. Sew sleeves into armholes. Join side and sleeve seams.

frill edged cardiagn

MEASUREMENTS

To fit bust	86	92	97	cm
	34	36	38	in
Actual measurements				
Bust excluding frill	96	102	109	cm
	38	40	43	in
Length to back neck excluding frill	53	56	59	cm
	20½	22	23¼	in
Sleeve seam excluding frill	42	43	44	cm
	16½	17	17¼	in

MATERIALS

14(15:16) 50g balls of Debbie Bliss alpaca silk dk in Damson 07.

Pair each 3¼mm (US 5), 4mm (US 6) and 4½mm (US 7) knitting needles.

Long 3¼mm (US 5), 4mm (US 6) and 4½mm (US 7) circular needles.

TENSION

25 sts and 31 rows to 10cm/4in square over patt using 3¼mm (US 5) needles.

ABBREVIATIONS

pkp = [p1, k1, p1] all into next st.
Also see page 46.

BODY

(Worked in one piece to armholes)

With 3¼mm (US 5) circular needle, cast on 25(33:41) sts.

1st row (right side) K2, [p1, k3] to last 3 sts, p1, k2.

2nd row Cast on 8 sts and work p2, [k1, p3] to last 3 sts, k1, p2. 33(41:49) sts.

3rd row Cast on 8 sts and work k2, [p1, k3] to last 3 sts, p1, k2. 41(49:57) sts.

Cont in this way casting on 8 sts at beg of next 10 rows, taking all new sts into patt as set. 121(129:137) sts. Mark each end of last row with coloured thread to indicate the width of the back and the position of the lower edge of the side seams.

Now, taking all new sts into patt, make sts for the left and right fronts as follows: cast on 8 sts at beg of next 2 rows, 4 sts at beg of next 20 rows, 2 sts at beg of foll 10(12:14) rows; then inc one st at each end of next and 1(3:5) foll alt rows. 241(257:273) sts.



1st row (right side) K2, [p1, k3] to last 3 sts, p1, k2.

2nd row P2, [k1, p3] to last 3 sts, k1, p2.

Cont straight in patt as set until work measures 29(31:33)cm/11½(12¼:13)in from side seam markers, ending with a wrong side row.

Divide for Back and Fronts

Next row (right side) With 3¼mm (US 5) needles, work k2, p2tog, k2, [p1, k3] 11(12:13) times, p2tog, k2, turn and cont on these 52(56:60) sts only for right front, leave rem 187(199:211) sts on the circular needle.

Next row (wrong side) P2, k1, patt to last 3 sts, k1, p2.

Next row K2, p2tog, patt to last 4 sts, p2tog, k2.

Rep the last 2 rows 6(7:8) more times and the 1st of these 2 rows again. 38(40:42) sts.

Next row K2, p2tog, patt to last 3 sts, p1, k2.

Next row P2, k1, patt to last 3 sts, k1, p2.

Keeping armhole edge straight, cont to dec one st as before at beg (front edge) of next and every foll 4th row until 25(27:29) sts rem, ending with a dec row.

Shape shoulder

Keeping patt correct, cast off 9(9:10) sts at beg of next row and 8(9:10) sts at beg of foll alt row.

Work one row.

Cast off rem 8(9:9) sts.

With right side facing, rejoin yarn to sts on circular needle and cast off 13 sts for right underarm, with one st on needle after cast off, work skpo, p1, [k3, p1] 25(27:29) times, k2tog, k1, cast off next 13 sts, with one st on needle after cast off, work k2tog, p1, [k3, p1] 11(12:13) times, k2, p2tog, k2.

BASIC INFORMATION

The quantities of yarn are based on average requirements and are therefore approximate. It is essential to work to the stated tension and you should always knit a tension square before starting. If you have too many stitches to 10cm/4in your tension is tight and you should change to a larger needle. If there are too few stitches, your tension is loose and you should change to a smaller needle. We cannot accept responsibility for the finished product if any yarn other than the one specified is used. Instructions given are for the first size, with larger sizes in round brackets. Where only one figure or instruction is given this applies to all sizes. Work all directions inside square brackets the number of times stated. See ball band for washing and pressing instructions.

standard abbreviations

alt = alternate
beg = beginning
cont = continue
dec = decrease
fol = following
inc = increase
k = knit
kfb = knit into front and back of st
m1 = make one st by picking up the loop lying between st just worked and next st and working into back of it
p = purl
pfb = purl into front and back of st
patt = pattern
psso = pass slipped st over
rem = remaining
rep = repeat
skpo = slip 1, knit 1, pass slipped stitch over
sl = slip
st(s) = stitch(es)
st st = stocking stitch
tbl = through back loop
tog = together
yf = yarn forward
yon = yarn over needle
yrn = yarn round needle

USA Glossary

cast off = bind off
moss stitch = seed stitch
tension = gauge
stocking stitch = stockinette stitch
yarn forward, yarn over needle, or yarn round needle = yarn over

Debbie Bliss



alpaca silk two

